

***Buy before 20 June 2019
to receive FREE
Exposed Aggregate Driveway.**

Image is indicative only, not of this particular property.

New Haven 207

Fixed Price \$377,500

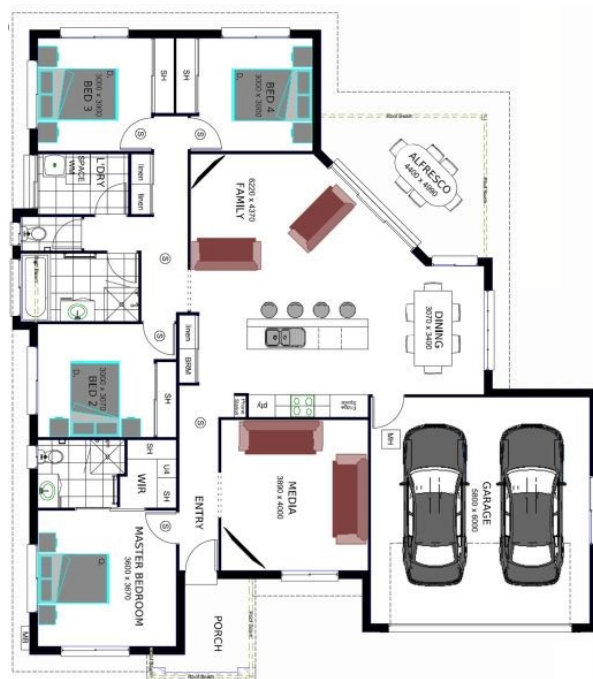
Lot 215 12 Samphire Street, Eli Waters

Area House: 207m² Land: 650m²

INCLUSIONS

- Open plan living with under roof alfresco
- Separate media room
- Large kitchen with island bench
- Ceramic cooktop, stainless steel oven & rangehood
- Ensuite & W.I.R. to bed 1, built-in robes to all bedrooms
- Vinyl plank flooring to entry & main living area
- Carpet to bedrooms
- Ceiling fans to bedrooms, family & media rooms
- Double garage with remote panel-lift door & internal access
- Insect screens to windows, safety screen to glass sliding door
- Electric hot water system
- Termite resistant structural timber frame
- Concrete driveway, letterbox and clothesline
- Fully fenced to house alignment with gates and returns
- Yard fully turfed to curb
- 5 mins drive to schools, childcare, shops and parks.
- Completion expected late October 2019

*Conditions apply.



Rod Marks

m: 0408 619 491

e: rod@herveybayhouseandland.com.au

w: thesanctuaryestate.com.au

***Details correct at time of publication, but subject to change without notice. 24 Apr 2019**



HOUSE & LAND
Hervey Bay

