

House & Land Package.



From \$421,400* (incl GST)

Lot 526 (600 m²)

Package includes[^]:

- + Executive Facade with Express inclusions
- + Letter Box, Clothes line, Fly screens
- + Turf and Fencing allowance
- + Omega Appliances incl Dishwasher
- + M class engineering
- + Driveway allowance

[^]Please see the website for a full list of inclusions.

Brookfield 224.



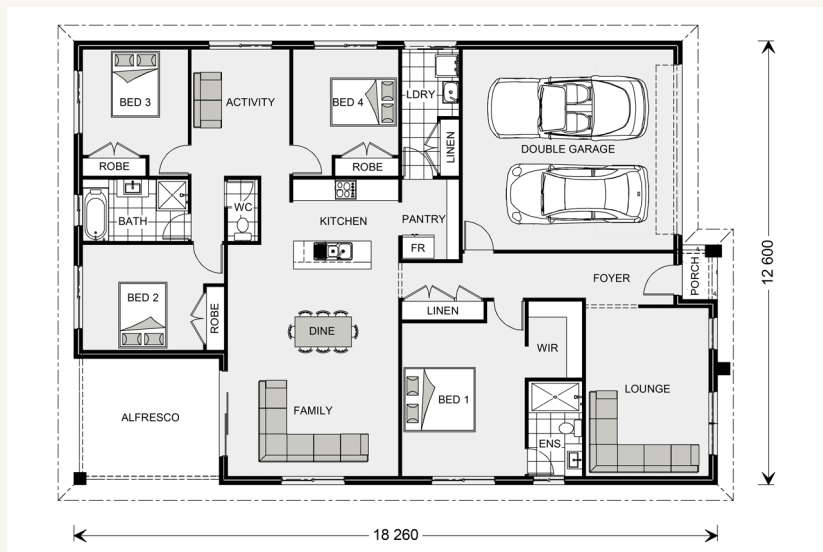
Itemised Floor Area	Area
Internal	171.20
Garage	37.10
Alfresco	14.70
Porch	1.40
Gross	224.40

Drop in for a chat today.

Unit 1, 152 Boat Harbour Drive,
Pialba QLD 4655

Contact us.

Call Jodie Flynn or David Hinds on 07 4124 6888,
email jodie.flynn@gjgardner.com.au or
david.hinds@gjgardner.com.au or visit us
online at gjgardner.com.au



Terms and conditions *Package price is based on standard home, standard floor plan and standard façade (may be smaller than façade shown). Package may be subject to developer's design review panel, council final approval and G.J. Gardner Homes procedure of purchase. Package price excludes stamp duty on land, legal fees and conveyancing costs (including transfer of title and searches). Prices are inclusive of GST and may change without notice. Package subject to two separate contracts. G.J. Gardner Homes makes no guarantee the lot number advertised will be available at the time of purchase. Photographs may depict fixtures, finishes and features not supplied by G.J. Gardner Homes. Excluded items include but are not limited to landscaping items such as planter boxes, retaining walls, water features, pergolas, screens, driveways and decorative items such as fencing and outdoor kitchens or barbecues. This design and illustration remains the property of G.J. Gardner Homes and may not be reproduced in whole or in part without written consent. For detailed home pricing, please talk to a New Homes Consultant. GJ Hervey bay Pty Ltd T/As G.J Gardner Homes Fraser Coast. Builders licence 1172776. Created 04/06/2019.