

**Completion due  
Aug**



Image indicative of Pearl design, not of specific property.

# Pearl

**Lot 526 Sailaway Cct, Eli Waters**

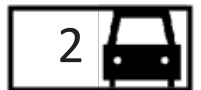
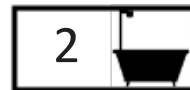
**Fixed Price**

**\$333,000**

**Area**

**House: 170m<sup>2</sup>**

**Land: 600m<sup>2</sup>**



## SUPERIOR INCLUSIONS

- Open plan living with Colorbond roof to patio
- Ceramic cooktop, rangehood & fan-forced oven
- 1<sup>3/4</sup> bowl stainless steel sink
- Dishwasher space provided
- Ensuite & W.I.R. to bed 1, built-in robes to all bedrooms
- Vinyl plank flooring to entry, kitchen, family/dining & hall
- Carpet to lounge & bedrooms
- 6 Ceiling fans to family room & bedrooms
- Double remote lock up garage with internal access
- Vertical drapes to living areas
- Safety screens to opening windows and doors
- Electric hot water system
- 3 coat paint system to interior
- Timber frame & trusses. Full termite treatment to slab
- Concrete driveway and path to entry
- Letterbox and clothesline
- Fully fenced to house alignment with gates and returns
- Up to 350m<sup>2</sup> turf to front/rear yards
- Six star energy efficiency rating

## Rod Marks

m: 0408 619 491

e: [rod@herveybayhouseandland.com.au](mailto:rod@herveybayhouseandland.com.au)

w: [herveybayhouseandland.com.au](http://herveybayhouseandland.com.au)

\*Prices & completion date correct at time of publication, and subject to change without notice. 19 May 2020.



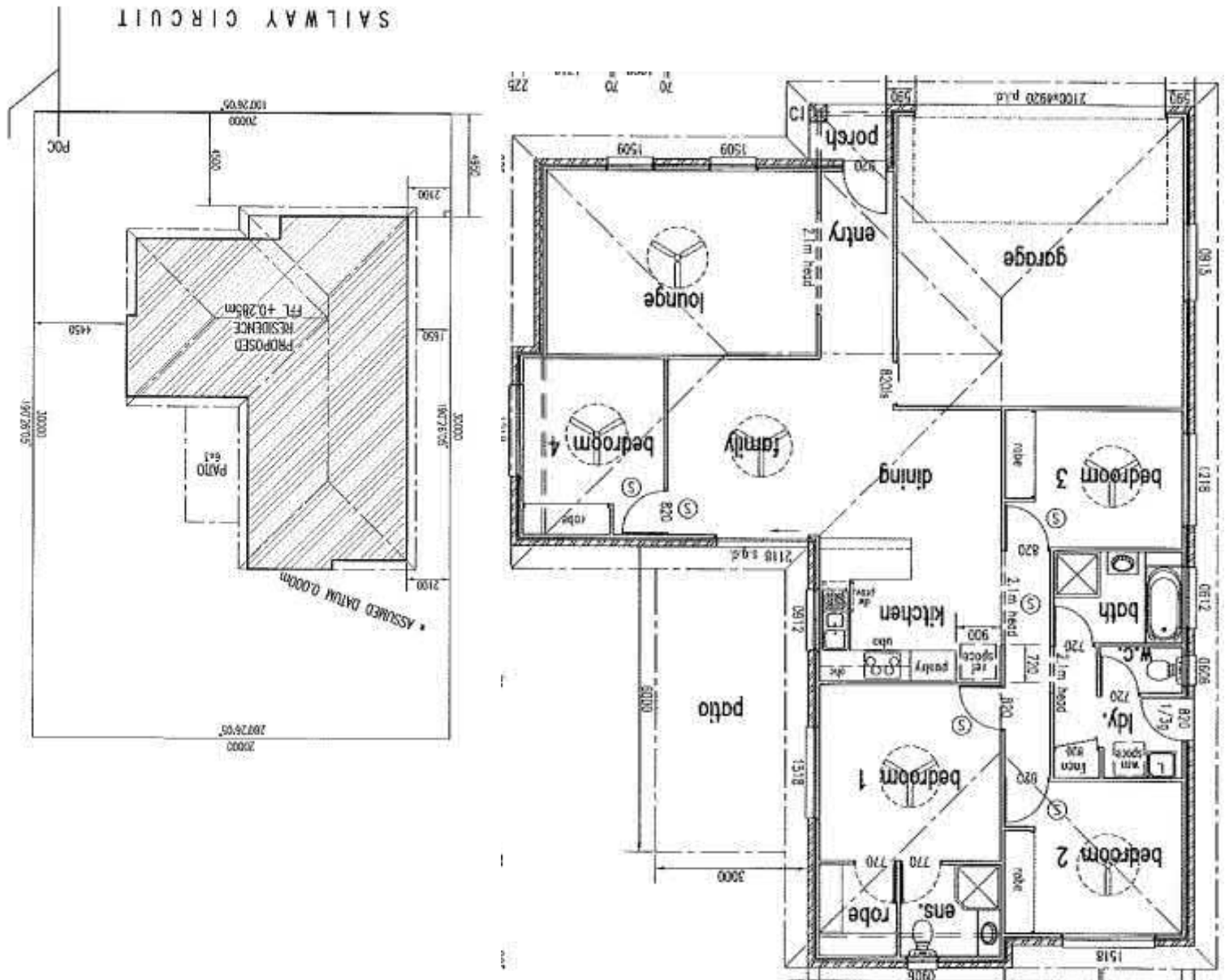
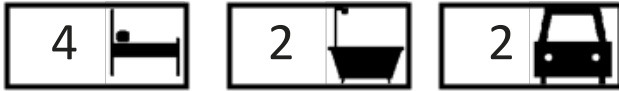
**HOUSE & LAND**  
Hervey Bay

**Pearl**

Lot 526 Sailaway Cct, Eli Waters

Fixed Price

**\$333,000**



Rod Marks

m: 0408 619 491

e: [rod@herveybayhouseandland.com.au](mailto:rod@herveybayhouseandland.com.au)

w: [herveybayhouseandland.com.au](http://herveybayhouseandland.com.au)

\*Prices & completion date correct at time of publication, and subject to change without notice. 19 May 2020.



**HOUSE & LAND**  
Hervey Bay