

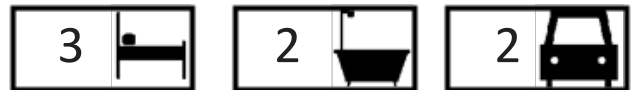


Cherry

Lot 528 Sailaway Cct, Eli waters

Fixed price **\$312,000**

Area House: 146m2 Land: 450m2



SUPERIOR INCLUSIONS

- Open plan living with Colorbond roof to patio
- Ceramic cooktop, rangehood & fan-forced oven
- 1^{3/4} bowl stainless steel sink
- Dishwasher space provided
- Ensuite to bed 1, built-in robes to all bedrooms
- Vinyl plank flooring to entry, kitchen, family/dining & hall
- Carpet to bedrooms
- Ceiling fans to family room & bedrooms
- Double remote lock up garage with internal access
- Vertical drapes to living areas
- Safety screens to opening windows and doors
- Electric hot water system
- 3 coat paint system to interior
- Timber frame & trusses. Full termite treatment to slab
- Concrete driveway and path to entry
- Letterbox and clothesline
- Fully fenced to house alignment with gates and returns
- Up to 350m2 turf to front/rear yards
- Six star energy efficiency rating



Rod Marks
 m: 0408 619 491
 e: rod@herveybayhouseandland.com.au
 w: herveybayhouseandland.com.au

*Prices & completion date correct at time of publication, and subject to change without notice. Images are indicative of the Cherry design, but not of actual property. Specifications, colours and finishes may vary. 1 April 2020.

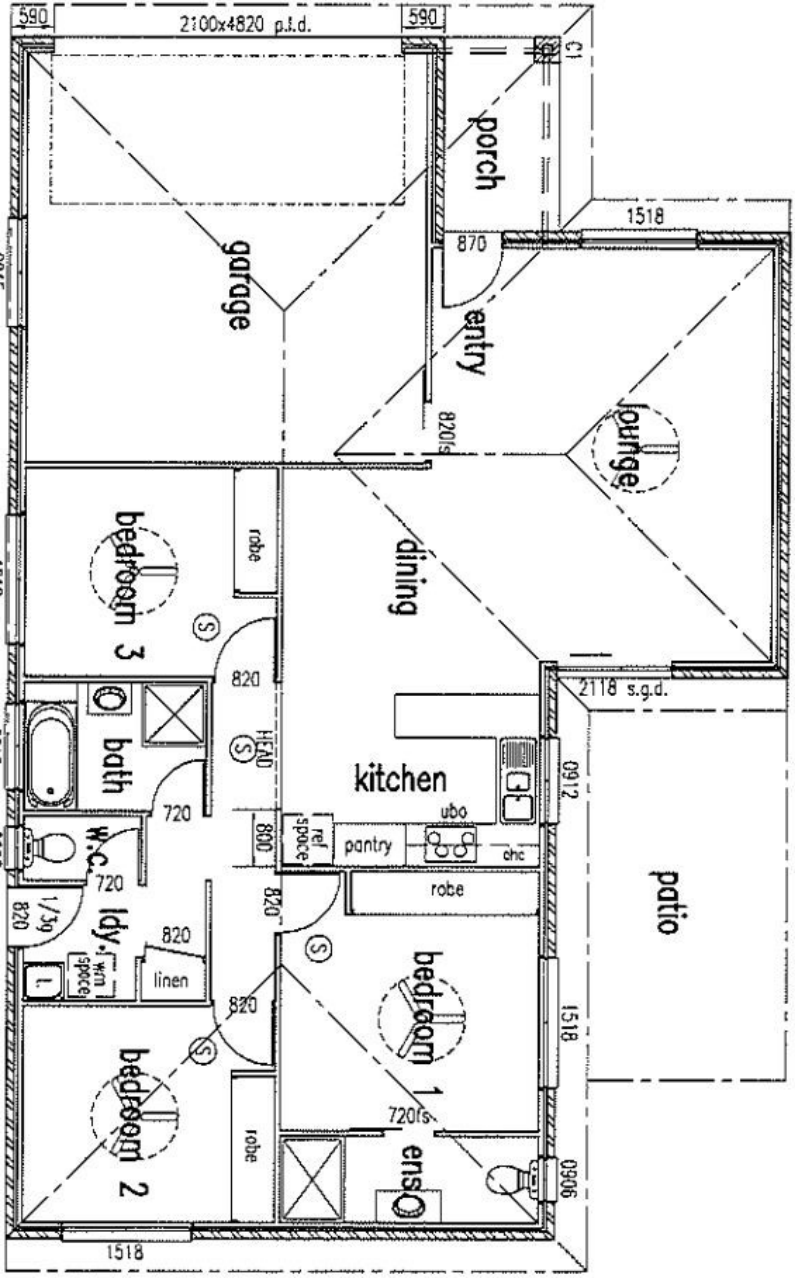
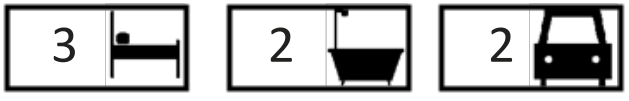


HOUSE & LAND
 Hervey Bay

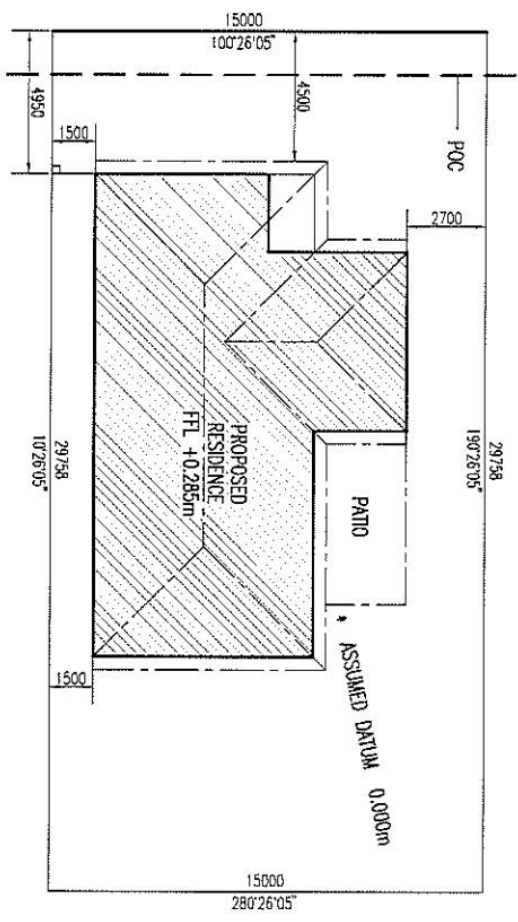
Hervey Bay's best value new address.

Cherry Lot 528 Sailaway Cct, Eli waters

Fixed price **\$312,000**



SAILWAY CIRCUIT



Rod Marks
m: 0408 619 491
e: rod@herveybayhouseandland.com.au
w: herveybayhouseandland.com.au



*Prices & completion date correct at time of publication, and subject to change without notice. Images are indicative of the Cherry design, but not of actual property. Specifications, colours and finishes may vary. 1 April 2020.