

**Ready Built Home  
Completion due mid 2020**



Image indicative on typical Violet design. Specifications, colours & finishes may vary.

## Violet

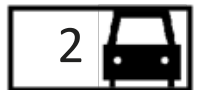
Lot 534 Sailaway Cct, Eli Waters

Fixed Price

# \$321,000

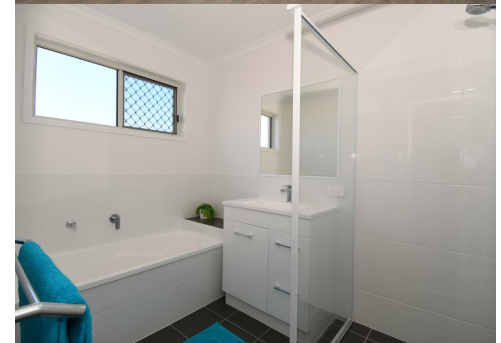
House: 166m<sup>2</sup>

Land: 448m<sup>2</sup>



### SUPERIOR INCLUSIONS

- Open plan living with Colorbond roof to patio
- Ceramic cooktop, rangehood & fan-forced oven
- 1<sup>3/4</sup> bowl stainless steel sink
- Dishwasher space provided
- Ensuite & W.I.R. to bed 1, built-in robes to all bedrooms
- Vinyl plank flooring to entry, kitchen, family/dining & hall
- Carpet to lounge & bedrooms
- 6 Ceiling fans to family room & bedrooms
- Double remote lock up garage with internal access
- Vertical drapes to living areas
- Safety screens to opening windows and doors
- Electric hot water system
- 3 coat paint system to interior
- Timber frame & trusses. Full termite treatment to slab
- Concrete driveway and path to entry
- Letterbox and clothesline
- Fully fenced to house alignment with gates and returns
- Up to 350m<sup>2</sup> turf to front/rear yards



**Rod Marks**  
m: 0408 619 491  
e: [rod@herveybayhouseandland.com.au](mailto:rod@herveybayhouseandland.com.au)  
w: [herveybayhouseandland.com.au](http://herveybayhouseandland.com.au)



**HOUSE & LAND**  
Hervey Bay

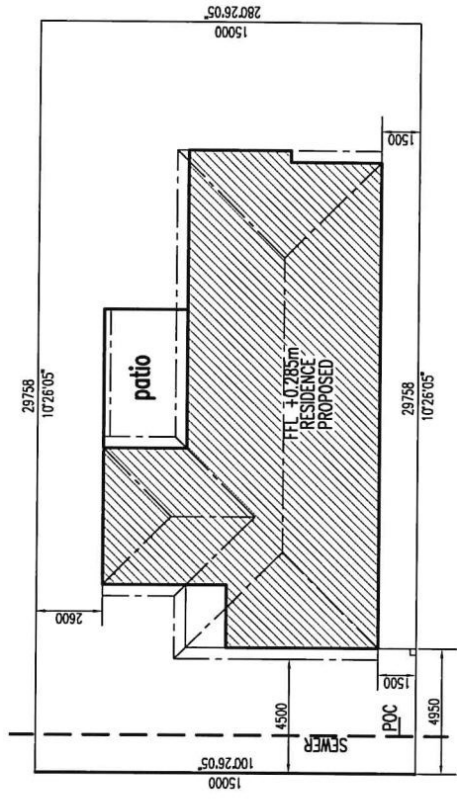
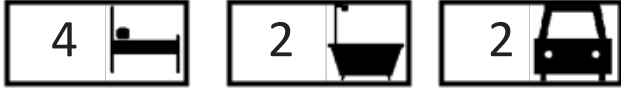
\*Prices & completion date correct at time of publication, and subject to change without notice. Image indicative of typical Violet design. Specifications, colours and finishes may vary. 7 April 2020

Hervey Bay's best value new address.

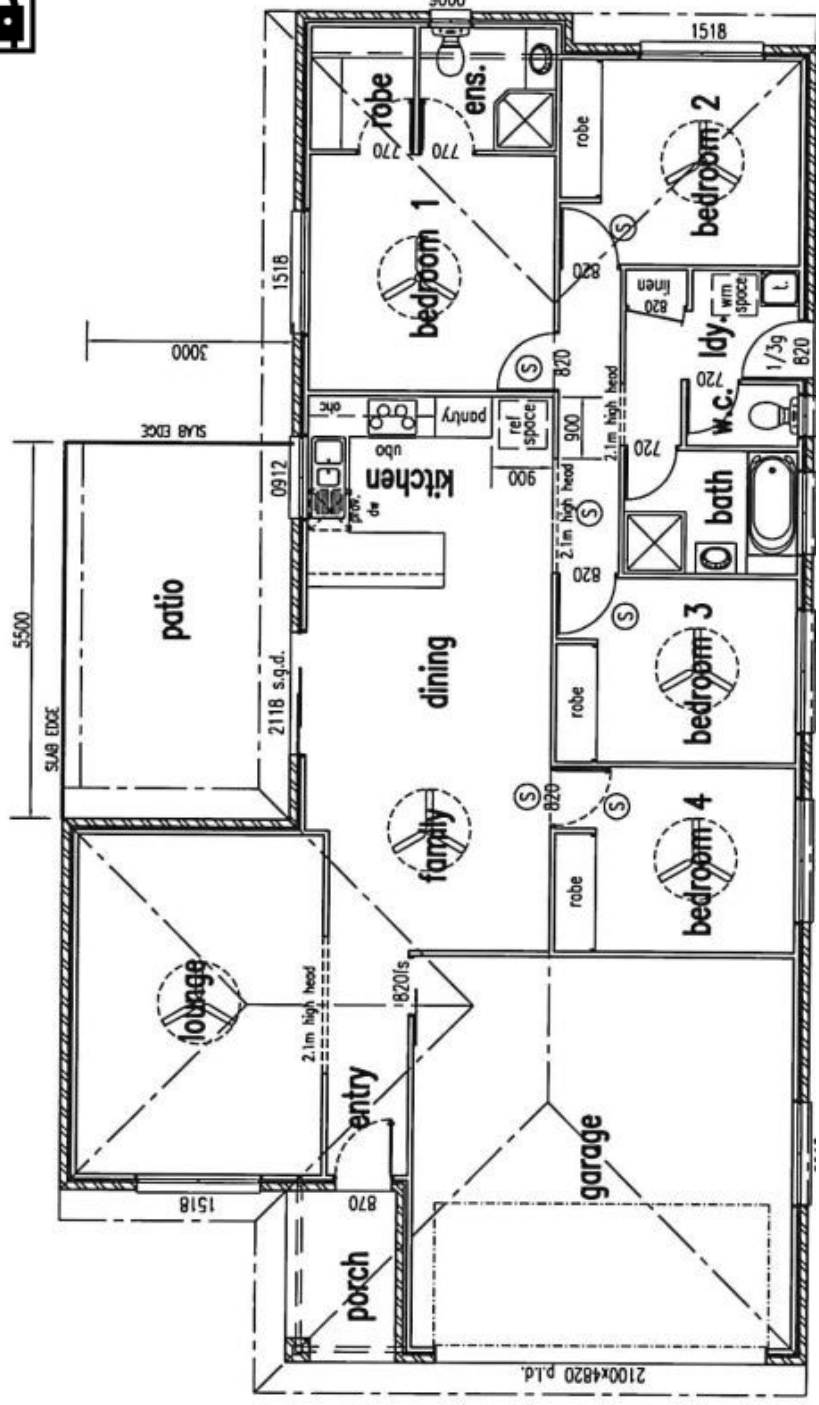
## Violet

Lot 534 Sailway Cct, Eli Waters

Fixed Price **\$321,000**



SAILWAY CIRCUIT



Rod Marks  
 m: 0408 619 491  
 e: rod@herveybayhouseandland.com.au  
 w: herveybayhouseandland.com.au

\*Prices & completion date correct at time of publication, and subject to change without notice. Image indicative of typical Violet design. Specifications, colours and finishes may vary. 7 April 2020



**HOUSE & LAND**  
 Hervey Bay